

The ADP is a special application of the Linear De-glaring Prism (LDP). These prisms are asymmetrical with a one-sided perpendicular flank. Parallel light is deflected asymmetrically and therefore enables directed illumination of objects and surfaces.

---

**Key features**

---

highly transparent asymmetrical microstructured prism sheet

---

asymmetrical prisms with a one-sided perpendicular flank, parallel/collimated light is deflected at 20 degrees

---

polycarbonate (PC) upon request for advanced fire safety regulations

---

---

**Applications**

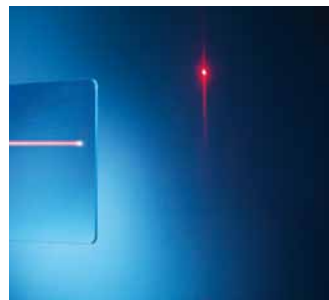
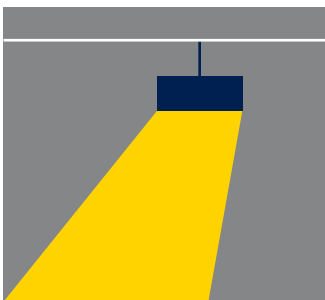
---

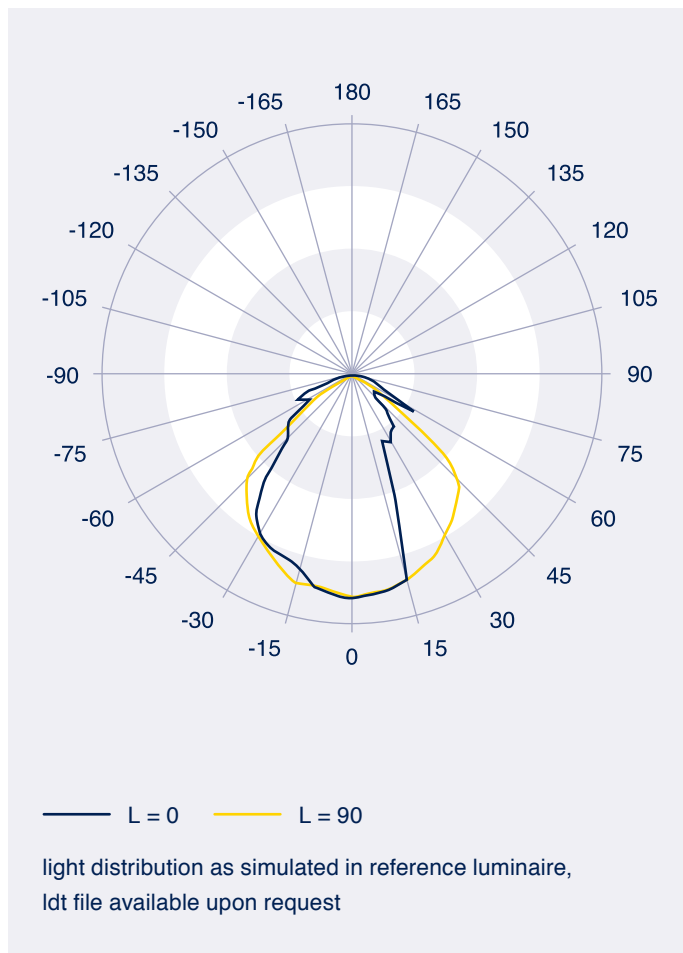
wallwasher application

---

creating asymmetrical light distribution curves, ideally with precolimated source

---





**Product data**

standard material	PMMA clear (acrylic) PC upon request
available size	rectangle up to 1500 mm x 300 mm square up to 600 mm x 600 mm customer specific cuts and optional profile edge treatment (milling)
thickness	3 mm (2.5 up to 6.0 mm upon request)
prism pitch	1 mm
refractive index	1.491
transmittance <sub>D65</sub>	92% (acrylic clear)
efficiency	> 95% (in typical LED luminaire)
temperature range	-40 °C up to +80 °C (acrylic) / 120 °C (PC)
customization options	development of prismatic microstructures for your specific applications, tooling and series production